



# Win a Stationery Bundle for Your School and Student Prizes for KS1 and KS2

True Harvest Seeds is the national wildflower preservation charity for the island of Ireland. Through support from schools, businesses and individuals like you, we are rebuilding the National Seed Vault, to house the incredible collection of native flowers, trees, shrubs and crops found here.

## **Included in this free pack:**

- KS1 Plant Colouring Competition
- KS2 Seed Vault Design Competition
- Free plant teaching resource for you to use with your class

To enter the competition, send or print a copy of our entry forms to your students. When they have coloured in, or designed their seed vault, send the completed entries to our office in Downpatrick.

We ask students to make a voluntary donation of £1 with their entry, which goes directly to the work of seed preservation and the future seed vault, but they don't have to, they can still enter the competition.

As a school, you can choose to collect the money and transfer it to us as a lump sum, or provide the link below for parents to donate directly: **<https://trueharvestseeds.org/school-comp-23>**

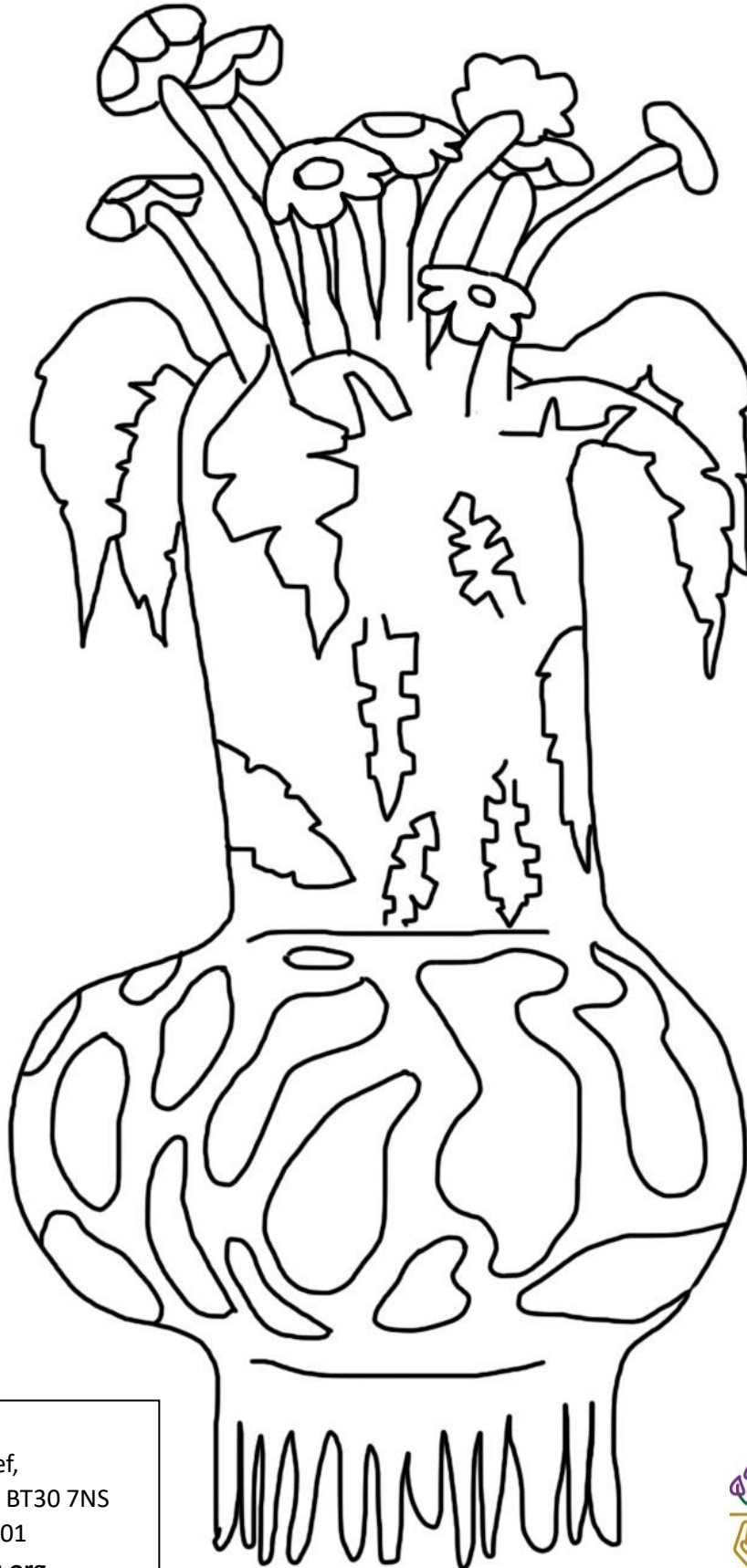
The closing date for the competition is 10pm on 30th November 2023.  
Full terms and conditions are available at [www.trueharvestseeds.org/comp](http://www.trueharvestseeds.org/comp)

True Harvest Seeds  
36 Ardglass Road, Kilclief, Downpatrick, Co Down, BT30 7NS  
Registered charity 100201  
**[www.trueharvestseeds.org](http://www.trueharvestseeds.org)**

# Colouring Competition (KS1)

School: \_\_\_\_\_ Class: \_\_\_\_\_

Name: \_\_\_\_\_



True Harvest Seeds  
36 Ardglass Road, Kilclief,  
Downpatrick, Co Down, BT30 7NS  
Registered charity 100201  
[www.trueharvestseeds.org](http://www.trueharvestseeds.org)



# Design a Seed Vault Competition (KS2)

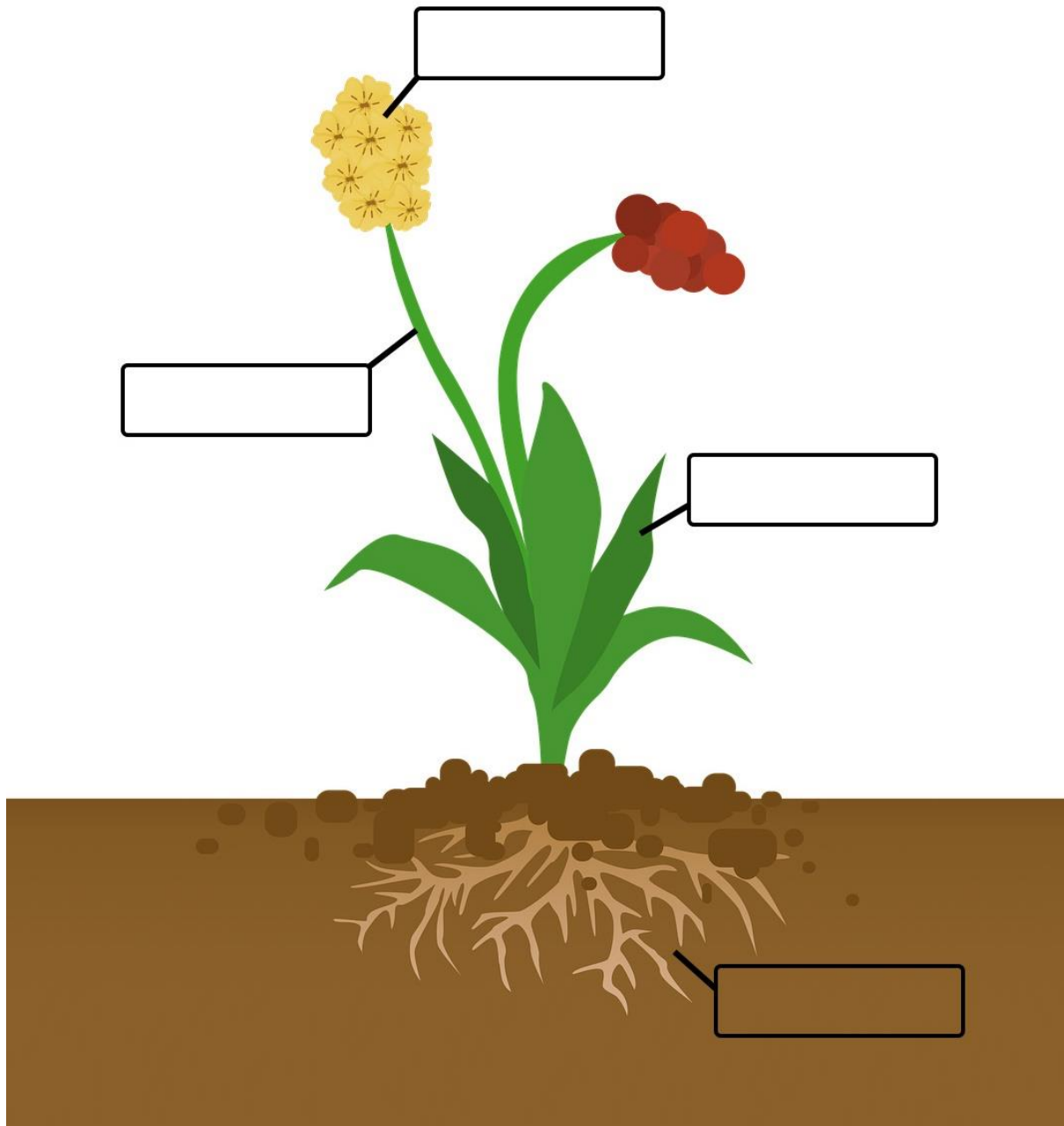
School: \_\_\_\_\_ Class: \_\_\_\_\_

Name: \_\_\_\_\_

True Harvest Seeds  
36 Ardglass Road, Kilclief,  
Downpatrick, Co Down, BT30 7NS  
Registered charity 100201  
[www.trueharvestseeds.org](http://www.trueharvestseeds.org)

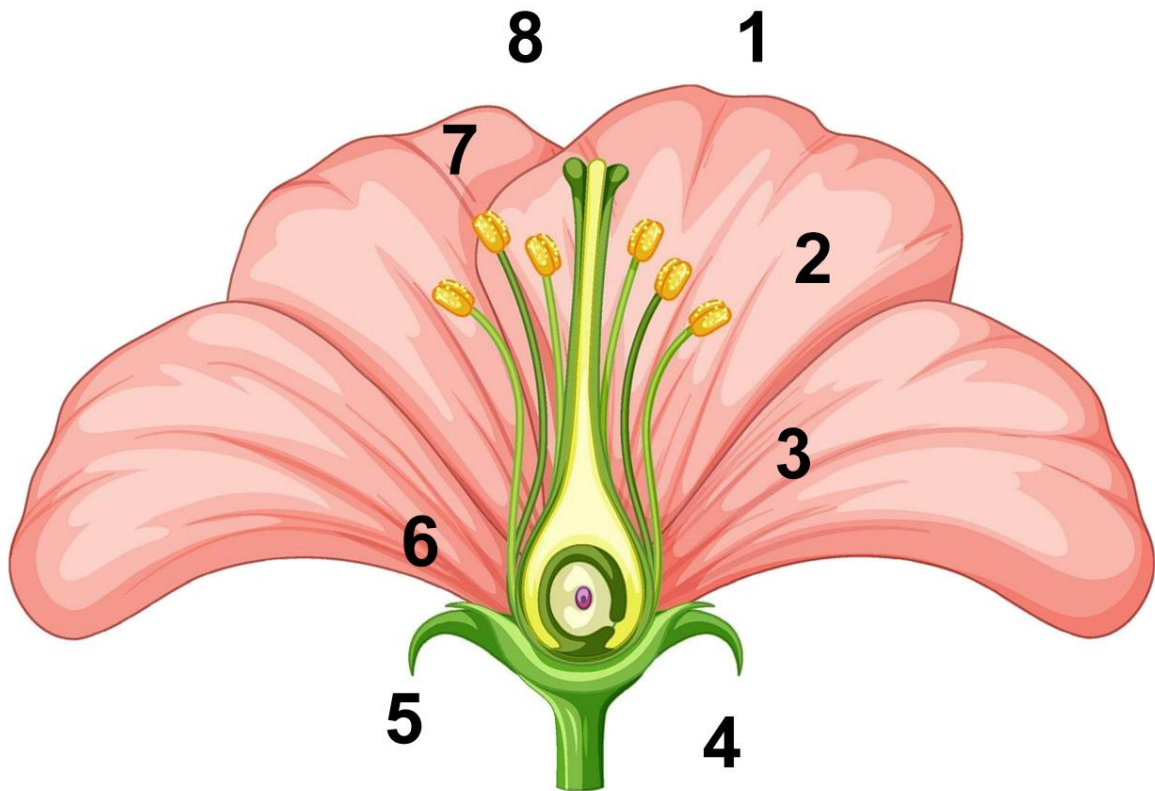


# Plant Parts (KS1)



<b>Flower</b>	<b>Stem</b>	<b>Roots</b>	<b>Leaf</b>
---------------	-------------	--------------	-------------

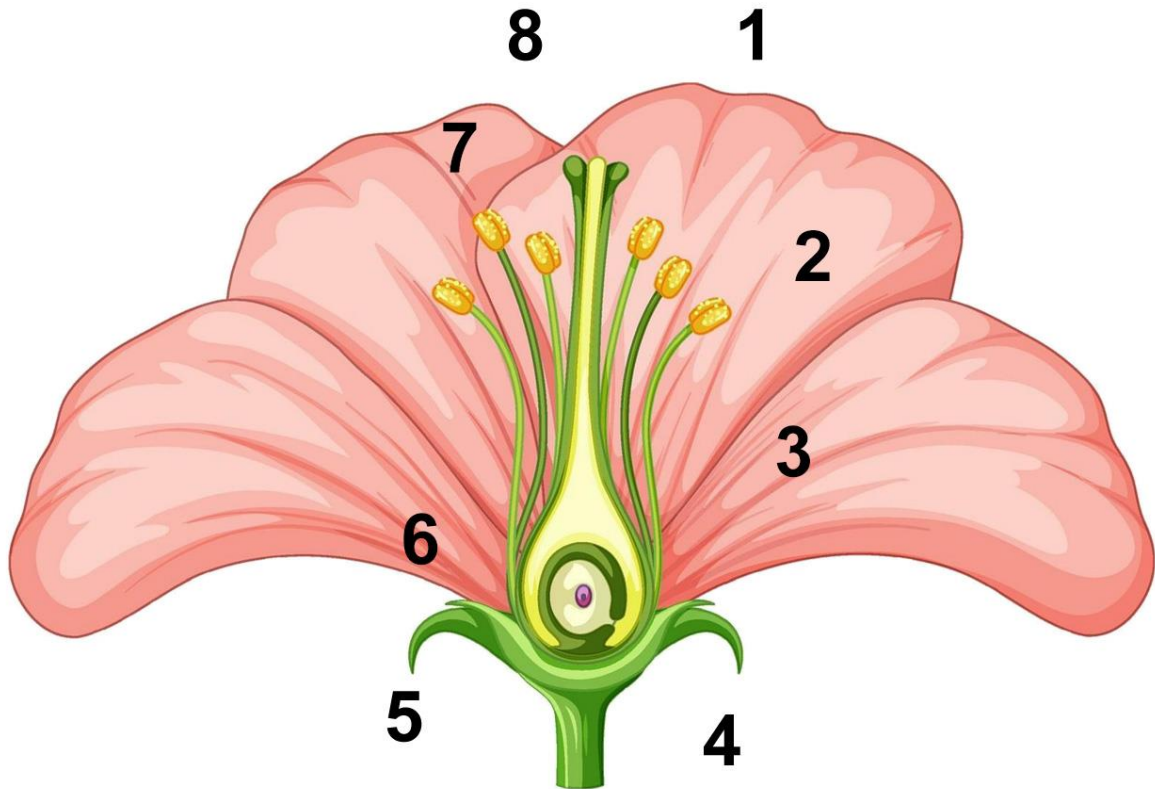
# Flower Parts (KS2)



1. \_\_\_\_\_
2. \_\_\_\_\_
3. \_\_\_\_\_
4. \_\_\_\_\_
5. \_\_\_\_\_
6. \_\_\_\_\_
7. \_\_\_\_\_
8. \_\_\_\_\_

- Stigma
- Ovary
- Sepal
- Petal
- Receptacle
- Filament
- Anther
- Style

# Flower Parts (KS2) - Answers



1. Petal

2. Anther

3. Filament

4. Receptacle

5. Sepal

6. Ovary

7. Style

8. Stigma

Stigma

Ovary

Sepal

Petal

Receptacle

Filament

Anther

Style

# Seed Vaults Around the World

Discuss these ideas with your class to help them think about the design of an efficient and effective seed vault.

## Millenium Seed Bank at Kew Gardens, England

Planting, growing and study areas for scientists to work.



## Inside Fort Collins, USA

Secure vaults with catalogued seed collections for replanting and safe storage for over 100 years.



## Svalbard Seed Vault, Norway

Low energy consumption to keep seeds frozen, secure from severe weather.

## Proposed Native Irish Seed Vault

